

Materials.

Steel and thermoplastic chains, modular belts and rubbers.

	TYPE	DESCRIPTION	FEATURES
STEEL	S	Carbon Steel	Through hardened carbon steel. Surface and core hardness of 43 HRC. Excellent strength and wear resistance. Not suitable in presence of water.
	SS - 4	Ferritic Stainless Steel	Cold rolled ferritic stainless steel. Good wear, mechanical and corrosion resistance. For food & beverage applications.
	P	Prima Performance Steel	Superior grade of cold rolled special ferritic stainless steel. Special Cr-Ni alloy offering very good wear and mechanical properties. Particularly suitable for high productivity lines (combiners and inliners).
	SS	Austenitic Stainless Steel	Cr-Ni austenitic cold rolled stainless steel. It guarantees the best corrosion resistance to withstand chemical attack. It offers very good wear resistance, due to work hardening and homogeneous chemical structure.
	NEW BS	Maintenance free carbon steel	Rollers base chains for maintenance free applications
ACETAL POM	WA White	White Acetal	DuPont™ Delrin® homopolymer acetal resin.
	UP Dark Brown	Ultra Performance Acetal Resin	DuPont™ Delrin® Ultra Performance special homopolymer acetal resin. Particularly suitable for applications where low coefficient of friction and contained dusting are needed.
	DK ² Dark Green	Superior Grade of Acetal Resin (DK²)	Delrin® acetal resin reinforced with Kevlar® , newly developed by Regina and DuPont™, able to reach the lowest coefficient of friction with maximum wear resistance. Thanks to the superior properties of DK² , the usage of lubricants can be drastically reduced or even eliminated without losing performance in conveyor applications.
	AS Black	Antistatic Acetal Resin	Conductive acetal resin particularly suitable for all applications where static charge on the chain must be avoided.
POLYAMIDE PA	AR Black	Abrasion Resistant Polyamide	Suitable for glass manufacturing applications. Reinforced polyamide with excellent wear resistance and low dusting. Only for dry running applications.
POLYPROPYLENE PP	P Light Blue	Reinforced Polypropylene	For FliteTop® Chains. Reinforced polypropylene that guarantees the best corrosion resistance to withstand chemical attack and an optimum high temperature resistance.
	PP Grey	Special Polypropylene	For Matveyor® Belts. Special polypropylene that guarantees the best corrosion resistance to withstand chemical attack and an optimum high temperature resistance.
POLYESTER PBT	ULF Light Grey	Ultra Low Friction Polyester Resin	Polyester resin that offers good mechanical strength in combination with low coefficient of friction.
RUBBER	PG Black	Nitrilic Rubber	For stainless steel chains. Nitrilic rubber with hardness of 55 ShA and high wear resistance that guarantees an excellent product grip in inclined/declined conveyors.
	Thermo plastic Green	Thermoplastic Rubber	Special Thermoplastic rubber with hardness from 50 ShA up to 70 ShA and optimum wear resistance that guarantees exceptional product grip in inclined/declined conveyors and elevators/lowerators, extending life without losing elasticity.
	EPDM Black	EPDM Rubber	For gripper chain series. EPDM rubber with hardness of 60 ShA guarantees an excellent grip and high temperatures resistance.

DuPont™ Delrin® and DuPont™ Kevlar® are registered trade marks of E.I. DuPont De Nemours and Associates.

Applications.

Chains.


FliteTop®

		PRODUCTS				
		STEEL CHAINS				
CONVEYED PRODUCTS	APPLICATIONS	Carbon Steel (S)	Ferritic (SS - 4, P)	Austenitic (SS)	PHD Series	PG Rubberized Series
CANS (2-3 PIECES)	Depalletizer					
	Inliner/combiner					
	Mass conveyors					
	Accumulation tables					
	Sterilizers / Rinsers Elevators / Lowerators					
	Infeed packaging machines					
	Packaging machines					
	Packaged products convey					
	Inclined conveyors					
PET BOTTLES	Inliner/combiner					
	Mass conveyors					
	Accumulation tables					
	Sterilizers / Rinsers Elevators / Lowerators					
	Infeed packaging machines					
	Packaging machines					
	Packaged products convey					
	Inclined conveyors					
GLASS BOTTLES*	Depalletizer					
	Inliner/combiner					
	Mass conveyors					
	Accumulation tables					
	Sterilizers / Rinsers Elevators / Lowerators					
	Infeed packaging machines					
	Packaging machines					
	Packaged products convey					
	Inclined conveyors					
GLASS BOTTLES	Inliner/combiner					
	Mass conveyors					
	Accumulation tables					
	Palletizer					
	Omega / Blowing Machines					
AUTOMOTIVE / MECHANICAL IND.	Conveyors lines					
CHEMICAL, DETERGENTS, PHARMACEUTICAL AND COSMETICS IND.	Conveyors lines					
DAIRY IND.	Conveyors lines					

For more detailed information, contact Regina Technical Department.

* In case of returnable glass bottles, please contact Regina Application Engineers

PRODUCTS

PLASTIC CHAINS					SPECIAL CHAINS			
Acetal (UP)		Abrasion Resistant (AR)	Polypropylene (P)	Rubberized Top	Two Piece	Gripper	LBP	Biplanar

Applications.

Chains/Belts.

Matveyor®
ULTOP®

		PRODUCTS								
		LIGHT DUTY SHORT PITCH (½")			LIGHT DUTY (1" PITCH)					
		600 300	500 200	HF 500 HF 200	1600	1500	RR 1600	RR 1500 1110	HF 1600 HFS 1600	
CONVEYED PRODUCTS	APPLICATIONS									
CANS (2-3 PIECES)	Depalletizer	■	■		■	■				
	Inliner/combiner				■	■				
	Mass conveyors	■	■		■	■				
	Accumulation tables	■	■		■	■		■		
	Warmer									
	Infeed packaging machines	■	■		■	■		■		
	Packaging machines		■	■			■			
	Packaged products convey	■	■	■	■	■		■	■	
PET BOTTLES	Inliner/combiner				■					
	Mass conveyors	■	■		■					
	Accumulation tables	■	■		■	■		■		
	Warmer									
	Infeed packaging machines	■	■		■			■		
	Packaging machines	■	■	■			■			
	Packaged products convey	■	■	■	■	■		■	■	
GLASS BOTTLES	Depalletizer	■			■					
	Inliner/combiner				■					
	Mass conveyors	■			■					
	Accumulation tables									
	Pasteurizer									
	Infeed packaging machines	■			■					
	Packaging machines	■	■	■			■			
	Packaged products convey	■		■	■				■	
GLASS BOTTLES	Inliner/combiner				■					
	Mass conveyors	■			■					
	Accumulation tables	■			■					
	Palletizer	■			■					
PHARMACEUTICAL DETERGENT COSMETICS CONTAINERS	Conveyors lines	■	■		■	■	■			
	Conveyors lines	■	■		■					
BAKERY	Conveyors lines	■	■		■					
PAPER/CARDBOARD	Conveyors lines	■			■					

For more detailed information, contact Regina Technical Department.

PRODUCTS

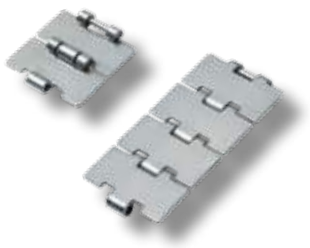
MEDIUM DUTY (3/4" PITCH)		HEAVY DUTY (1" PITCH)			ULTOP® HEAVY DUTY UCC (1 1/2" PITCH)		SIDEFLEXING CHAINS (1" PITCH)			HEAVY DUTY RAISED RIB (2" PITCH)	SIDEFLEXING BELTS (1 1/4" PITCH)		
7300	7200	USP USPM	HF USPM HFS USPM	LBP USPM	UCC	UCC 138 (3/4" Pitch)	783M 783T	782M	793T 793M 793L	3120	2555 2555T	2555HT 2555HT-SR	2555HTB 2555HTB-SR
■	■												
■	■				■		■	■					
■	■				■		■	■					
■	■									■			
										■			
■	■				■								
						■							
■	■	■	■	■	■						■	■	■
■					■		■						
■					■		■						
■	■												
										■			
■						■							
■	■	■	■	■	■						■	■	■
■		■			■				■				
■		■			■		■		■				
■		■			■		■		■				
		■								■			
■		■			■								
■						■							
■	■						■	■					
■		■			■		■		■				
■		■								■			
■	■					■	■	■					
■		■			■		■		■				
■		■								■			
■	■					■	■	■					
■		■			■		■		■		■	■	■
■		■			■						■	■	■

FliteTop®

Straight running steel chains.



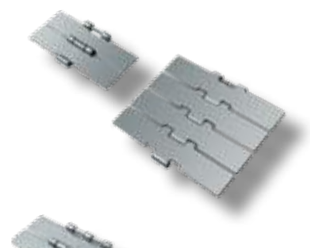
803 - Mini Hinge										
Width		Pitch		Thickness		Gap		Hinge		Materials
Inches	mm	Inches	mm	Inches	mm	Inches	mm	Inches	mm	Plate
1 ¼	31,8	1 ½	38,1	0.118	3	0.110	2,8	0.866	22	P
1 ¾	44,5	1 ½	38,1	0.118	3	0.110	2,8	0.866	22	P



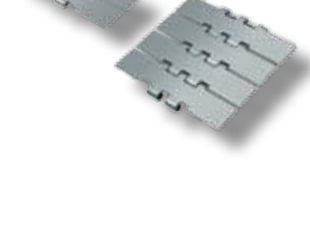
915 - Single Hinge, Reduced Plate Gap (1,6 mm)										
Width		Pitch		Thickness		Gap		Hinge		Materials
Inches	mm	Inches	mm	Inches	mm	Inches	mm	Inches	mm	Plate
2 ¼	57,1	1 ½	38,1	0.118	3	0.063	1,6	1.654	42	P
2 ½	63,5	1 ½	38,1	0.118	3	0.063	1,6	1.654	42	P
2 5/8	66,7	1 ½	38,1	0.118	3	0.063	1,6	1.654	42	P
3 ¼	82,6	1 ½	38,1	0.118	3	0.063	1,6	1.654	42	S SS-4 P SS
3.30	83,8	1 ½	38,1	0.118	3	0.063	1,6	1.654	42	SS-4 P
3 ½	88,9	1 ½	38,1	0.118	3	0.063	1,6	1.654	42	P
4	101,6	1 ½	38,1	0.118	3	0.063	1,6	1.654	42	S P SS
4 ½	114,3	1 ½	38,1	0.118	3	0.063	1,6	1.654	42	S SS-4 P SS
6	152,4	1 ½	38,1	0.118	3	0.063	1,6	1.654	42	S P SS
7 ½	190,5	1 ½	38,1	0.118	3	0.063	1,6	1.654	42	S SS-4 P SS



HD 915 - Single Hinge, Reduced Plate Gap (1,6 mm), Heat Treated Pin										
Width		Pitch		Thickness		Gap		Hinge		Materials
Inches	mm	Inches	mm	Inches	mm	Inches	mm	Inches	mm	Plate
3 ¼	82,6	1 ½	38,1	0.118	3	0.063	1,6	1.654	42	P
3.30	83,8	1 ½	38,1	0.118	3	0.063	1,6	1.654	42	P
4 ½	114,3	1 ½	38,1	0.118	3	0.063	1,6	1.654	42	P
7 ½	190,5	1 ½	38,1	0.118	3	0.063	1,6	1.654	42	P



HD 9157 - Heavy Duty Single Hinge, Reduced Plate Gap, Heat Treated Pin										
Width		Pitch		Thickness		Gap		Hinge		Materials
Inches	mm	Inches	mm	Inches	mm	Inches	mm	Inches	mm	Plate
7 ½	190,5	1 ½	38,1	0.118	3	0.063	1,6	2.244	57	P



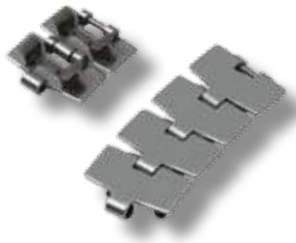
2815 - Double Hinge										
Width		Pitch		Thickness		Gap		Hinge		Materials
Inches	mm	Inches	mm	Inches	mm	Inches	mm	Inches	mm	Plate
7 ½	190,5	1 ½	38,1	0.118	3	0.071	1,8	3.150	80	S SS-4 P SS

FliteTop®

Sideflexing steel chains.



881 - Bevel										
Width		Pitch		Thickness		Sideflexing Radius		Hinge		Materials
Inches	mm	Inches	mm	Inches	mm	Inches	mm	Inches	mm	Plate
3 ¼	82,6	1 ½	38,1	0.118	3	18	457,2	1.693	43	S SS
4 ½	114,3	1 ½	38,1	0.118	3	24	609,6	1.693	43	S SS
7 ½	190,5	1 ½	38,1	0.118	3	24	609,6	1.693	43	S SS



881T - TAB											
Width		Pitch		Thickness		Sideflexing Radius		Hinge		Materials	
Inches	mm	Inches	mm	Inches	mm	Inches	mm	Inches	mm	Plate	
3 ¼	82,6	1 ½	38,1	0.118	3	18	457,2	1.693	43	S	SS
4 ½	114,3	1 ½	38,1	0.118	3	24	609,6	1.693	43	S	SS
7 ½	190,5	1 ½	38,1	0.118	3	24	609,6	1.693	43	S	SS



981 - Bevel, Reduced Plate Gap											
Width		Pitch		Thickness		Sideflexing Radius		Hinge		Materials	
Inches	mm	Inches	mm	Inches	mm	Inches	mm	Inches	mm	Plate	
3 ¼	82,6	1 ½	38,1	0.118	3	18	457,2	1.693	43	P	
3.30	83,8	1 ½	38,1	0.118	3	18	457,2	1.693	43	P	
4 ½	114,3	1 ½	38,1	0.118	3	24	609,6	1.693	43	P	
7 ½	190,5	1 ½	38,1	0.118	3	24	609,6	1.693	43	P	



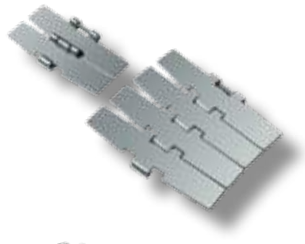
981T - TAB, Reduced Plate Gap											
Width		Pitch		Thickness		Sideflexing Radius		Hinge		Materials	
Inches	mm	Inches	mm	Inches	mm	Inches	mm	Inches	mm	Plate	
3 ¼	82,6	1 ½	38,1	0.118	3	18	457,2	1.693	43	P	
3.30	83,8	1 ½	38,1	0.118	3	18	457,2	1.693	43	P	
4 ½	114,3	1 ½	38,1	0.118	3	24	609,6	1.693	43	P	
7 ½	190,5	1 ½	38,1	0.118	3	24	609,6	1.693	43	P	



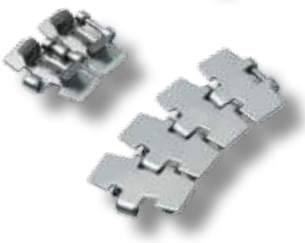
981M - Magnetic, Reduced Plate Gap											
Width		Pitch		Thickness		Sideflexing Radius		Hinge		Materials	
Inches	mm	Inches	mm	Inches	mm	Inches	mm	Inches	mm	Plate	
3 ¼	82,6	1 ½	38,1	0.118	3	19.685	500	1.654	42	SS-4	P
3.30	83,8	1 ½	38,1	0.118	3	19.685	500	1.654	42	SS-4	P
4 ½	114,3	1 ½	38,1	0.118	3	19.685	500	1.654	42		P
7 ½	190,5	1 ½	38,1	0.118	3	19.685	500	1.654	42		P



HD 981M - Magnetic, Reduced Plate Gap, Heat Treated Pin											
Width		Pitch		Thickness		Sideflexing Radius		Hinge		Materials	
Inches	mm	Inches	mm	Inches	mm	Inches	mm	Inches	mm	Plate	
3 ¼	82,6	1 ½	38,1	0.118	3	19.685	500	1.654	42	P	
3.30	83,8	1 ½	38,1	0.118	3	19.685	500	1.654	42	P	
4 ½	114,3	1 ½	38,1	0.118	3	19.685	500	1.654	42	P	
7 ½	190,5	1 ½	38,1	0.118	3	19.685	500	1.654	42	P	



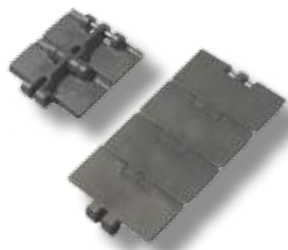
HD 9857M - Magnetic, Heavy Duty Single Hinge, Heat Treated Pin											
Width		Pitch		Thickness		Sideflexing Radius		Hinge		Materials	
Inches	mm	Inches	mm	Inches	mm	Inches	mm	Inches	mm	Plate	
7 ½	190,5	1 ½	38,1	0.118	3	29.528	750	2.244	57	P	



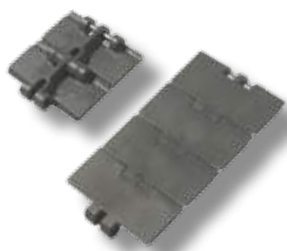
982T - TAB, Reduced Sideflexing Radius											
Width		Pitch		Thickness		Sideflexing Radius		Hinge		Materials	
Inches	mm	Inches	mm	Inches	mm	Inches	mm	Inches	mm	Plate	
3 ¼	82,6	1 ½	38,1	0.118	3	7.874	200	1.693	43	SS	

FliteTop®

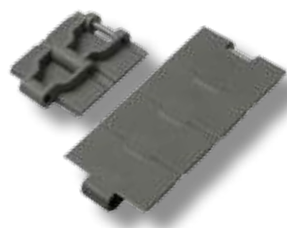
Straight running plastic chains.



820 - Single Hinge											
Width		Pitch		Thickness		Backflexing Radius		Hinge		Materials	
Inches	mm	Inches	mm	Inches	mm	Inches	mm	Inches	mm	Plate	
3 ¼	82,6	1 ½	38,1	0.157	4	1.575	40	1.638	41,6	UP	DK ² AR
3.30	83,8	1 ½	38,1	0.157	4	1.575	40	1.638	41,6	UP	DK ²
4	101,6	1 ½	38,1	0.157	4	1.575	40	1.638	41,6	UP	
4 ½	114,3	1 ½	38,1	0.157	4	1.575	40	1.638	41,6	UP	DK ² AR
6	152,4	1 ½	38,1	0.157	4	1.575	40	1.638	41,6	UP	
7.50	190,5	1 ½	38,1	0.157	4	1.575	40	1.638	41,6	UP	DK ²



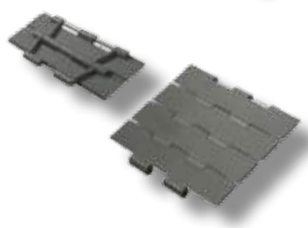
831 - Single Hinge, Reinforced Top Plate											
Width		Pitch		Thickness		Backflexing Radius		Hinge		Materials	
Inches	mm	Inches	mm	Inches	mm	Inches	mm	Inches	mm	Plate	
3 ¼	82,6	1 ½	38,1	0.189	4,8	1.575	40	1.638	41,6	UP	DK ²
3.30	83,8	1 ½	38,1	0.189	4,8	1.575	40	1.638	41,6	UP	DK ²
4 ½	114,3	1 ½	38,1	0.189	4,8	1.575	40	1.638	41,6	UP	DK ²
7.50	190,5	1 ½	38,1	0.189	4,8	1.575	40	1.638	41,6	UP	DK ²



828 - Reinforced Single Hinge, Reduced Plate Gap											
Width		Pitch		Thickness		Backflexing Radius		Hinge		Materials	
Inches	mm	Inches	mm	Inches	mm	Inches	mm	Inches	mm	Plate	
NEW 3 ¼	82,6	1 ½	38,1	0.157	4	1.575	40	1.654	42	UP	DK ² AR
3.30	83,8	1 ½	38,1	0.157	4	1.575	40	1.654	42	UP	DK ²
NEW 4 ½	114,3	1 ½	38,1	0.157	4	1.575	40	1.654	42	UP	DK ² AR



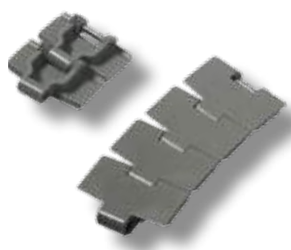
8257 - Heavy Duty Single Hinge, Reinforced Top Plate											
Width		Pitch		Thickness		Backflexing Radius		Hinge		Materials	
Inches	mm	Inches	mm	Inches	mm	Inches	mm	Inches	mm	Plate	
7 ½	190,5	1 ½	38,1	0.189	4,8	1.575	40	2.244	57	UP	
10	254	1 ½	38,1	0.189	4,8	1.575	40	2.244	57	UP	
12	304,8	1 ½	38,1	0.189	4,8	1.575	40	2.244	57	UP	



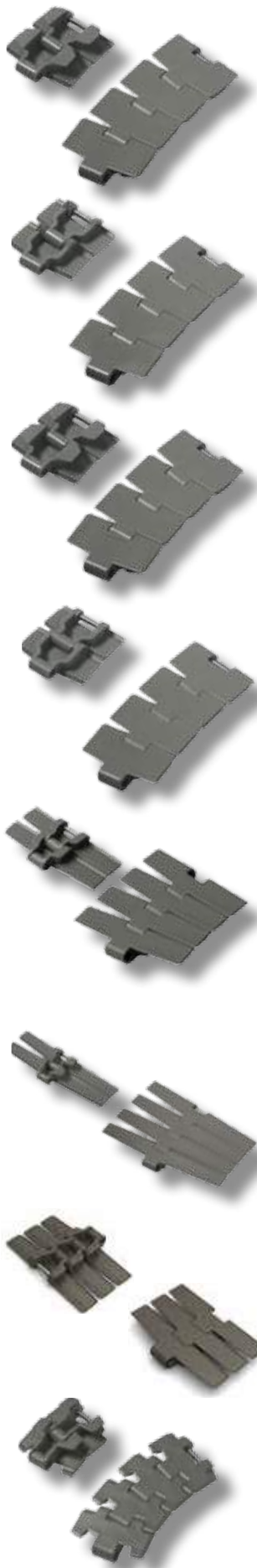
821 - Double Hinge, Reinforced Top Plate											
Width		Pitch		Thickness		Backflexing Radius		Hinge		Materials	
Inches	mm	Inches	mm	Inches	mm	Inches	mm	Inches	mm	Plate	
7 ½	190,5	1 ½	38,1	0.189	4,8	1.575	40	5.374	136,5	UP	DK ²
10	254	1 ½	38,1	0.189	4,8	1.575	40	5.374	136,5	UP	
12	304,8	1 ½	38,1	0.189	4,8	1.575	40	5.374	136,5	UP	

FliteTop®

Sidflexing plastic chains.



880 - Bevel											
Width		Pitch		Thickness		Sidflexing Radius		Hinge		Materials	
Inches	mm	Inches	mm	Inches	mm	Inches	mm	Inches	mm	Plate	
3 ¼	82,6	1 ½	38,1	0.157	4	18	457,2	1.693	43	UP	AR
4 ½	114,3	1 ½	38,1	0.157	4	19,685	500	1.693	43	UP	AR



880T - TAB

Width		Pitch		Thickness		Sideflexing Radius		Hinge		Materials		
Inches	mm	Inches	mm	Inches	mm	Inches	mm	Inches	mm	Plate		
3 ¼	82,6	1 ½	38,1	0.157	4	18	457,2	1.689	42,9	UP	DK ²	AR
3.30	83,8	1 ½	38,1	0.157	4	18	457,2	1.689	42,9	UP	DK ²	
4 ½	114,3	1 ½	38,1	0.157	4	19.685	500	1.689	42,9	UP	DK ²	AR

879 - Bevel, Reinforced Top Plate

Width		Pitch		Thickness		Sideflexing Radius		Hinge		Materials
Inches	mm	Inches	mm	Inches	mm	Inches	mm	Inches	mm	Plate
3 ¼	82,6	1 ½	38,1	0.189	4,8	18	457,2	1.693	43	UP
4 ½	114,3	1 ½	38,1	0.189	4,8	19.685	500	1.693	43	UP

879T - TAB, Reinforced Top Plate

Width		Pitch		Thickness		Sideflexing Radius		Hinge		Materials		
Inches	mm	Inches	mm	Inches	mm	Inches	mm	Inches	mm	Plate		
3 ¼	82,6	1 ½	38,1	0.189	4,8	18	457,2	1.689	42,9	UP	DK ²	
3.30	83,8	1 ½	38,1	0.189	4,8	18	457,2	1.689	42,9	UP	DK ²	
4 ½	114,3	1 ½	38,1	0.189	4,8	19.685	457,2	1.689	42,9	UP	DK ²	

**RANGE
EXTENSION**

880M RG - Magnetic, Reduced Plate Gap

Width		Pitch		Thickness		Sideflexing Radius		Hinge		Materials		
Inches	mm	Inches	mm	Inches	mm	Inches	mm	Inches	mm	Plate		
3 ¼	82,6	1 ½	38,1	0.157	4	19.685	500	1.654	42	UP	DK ²	
3.30	83,8	1 ½	38,1	0.157	4	19.685	500	1.654	42	UP	DK ²	
NEW 4 ½	114,3	1 ½	38,1	0.157	4	19.685	500	1.654	42	UP	DK ²	AR

882 - Bevel, Heavy Duty Single Hinge, Reinforced Top plate

Width		Pitch		Thickness		Sideflexing Radius		Hinge		Materials
Inches	mm	Inches	mm	Inches	mm	Inches	mm	Inches	mm	Plate
4 ½	114,3	1 ½	38,1	0.189	4,8	24	609,6	2.402	61	UP
7 ½	190,5	1 ½	38,1	0.189	4,8	24	609,6	2.402	61	UP
10	254	1 ½	38,1	0.189	4,8	24	609,6	2.402	61	UP
12	304,8	1 ½	38,1	0.189	4,8	24	609,6	2.402	61	UP

882T - TAB, Heavy Duty Single Hinge, Reinforced Top plate

Width		Pitch		Thickness		Sideflexing Radius		Hinge		Materials		
Inches	mm	Inches	mm	Inches	mm	Inches	mm	Inches	mm	Plate		
4 ½	114,3	1 ½	38,1	0.189	4,8	24	609,6	2.244	57	UP	DK ²	
7 ½	190,5	1 ½	38,1	0.189	4,8	24	609,6	2.244	57	UP	DK ²	
10	254	1 ½	38,1	0.189	4,8	24	609,6	2.244	57	UP		
12	304,8	1 ½	38,1	0.189	4,8	24	609,6	2.244	57	UP		

882M - Magnetic, Heavy Duty Single Hinge, Reinforced Top Plate

Width		Pitch		Thickness		Sideflexing Radius		Hinge		Materials
Inches	mm	Inches	mm	Inches	mm	Inches	mm	Inches	mm	Plate
7 ½	190,5	1 ½	38,1	0.189	4,8	24	609,6	2.244	57	UP
10	254	1 ½	38,1	0.189	4,8	24	609,6	2.244	57	UP
12	304,8	1 ½	38,1	0.189	4,8	24	609,6	2.244	57	UP

878T - TAB, Reinforced Top Plate, Reduced Sideflexing Radius

Width		Pitch		Thickness		Sideflexing Radius		Hinge		Materials		
Inches	mm	Inches	mm	Inches	mm	Inches	mm	Inches	mm	Plate		
3 ¼	82,6	1 ½	38,1	0.189	4,8	7.874	200	1.689	42,9	UP	DK ²	AR



880TA - TAB, Vacuum Series

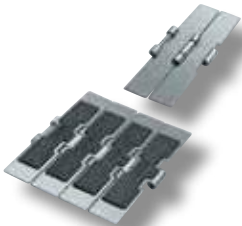
Width		Pitch		Thickness		Sideflexing Radius		Hinge		Materials
Inches	mm	Inches	mm	Inches	mm	Inches	mm	Inches	mm	Plate
3 1/4	82,6	1 1/2	38,1	0.157	4	18	457,2	1.689	42,9	UP

FliteTop[®] Rubberized chains.



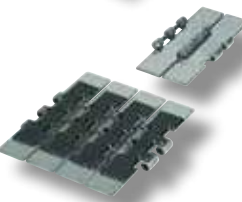
G 915 - Straight running, Steel plates, Single hinge

Width		Pitch		Thickness		Gap		Hinge		Materials	
Inches	mm	Inches	mm	Inches	mm	Inches	mm	Inches	mm	Plate	Rubber
3 1/4	82,6	1 1/2	38,1	0.118	3	0.063	1,6	1.654	42	P	PG
4 1/2	114,3	1 1/2	38,1	0.118	3	0.063	1,6	1.654	42	P	PG
7 1/2	190,5	1 1/2	38,1	0.118	3	0.063	1,6	1.654	42	P	PG



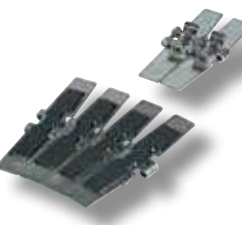
HDG 9157 - Straight running, Steel plates, Heavy duty single hinge, Heat treated pin

Width		Pitch		Thickness		Gap		Hinge		Materials	
Inches	mm	Inches	mm	Inches	mm	Inches	mm	Inches	mm	Plate	Rubber
7 1/2	190,5	1 1/2	38,1	0.118	3	0.063	1,6	2.244	57	P	PG



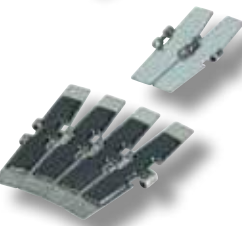
G 2815 - Straight running, Steel plates, Double hinge

Width		Pitch		Thickness		Gap		Hinge		Materials	
Inches	mm	Inches	mm	Inches	mm	Inches	mm	Inches	mm	Plate	Rubber
7 1/2	190,5	1 1/2	38,1	0.118	3	0.071	1,8	3.150	80	P	PG



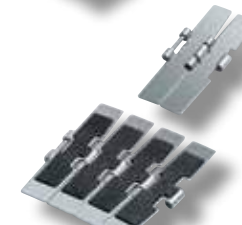
G 981T - Sideflexing TAB, Steel plates

Width		Pitch		Thickness		Sideflexing radius		Hinge		Materials	
Inches	mm	Inches	mm	Inches	mm	Inches	mm	Inches	mm	Plate	Rubber
3 1/4	82,6	1 1/2	38,1	0.118	3	18	457,2	1.693	43	P	PG
7 1/2	190,5	1 1/2	38,1	0.118	3	24	609,6	1.693	43	P	PG



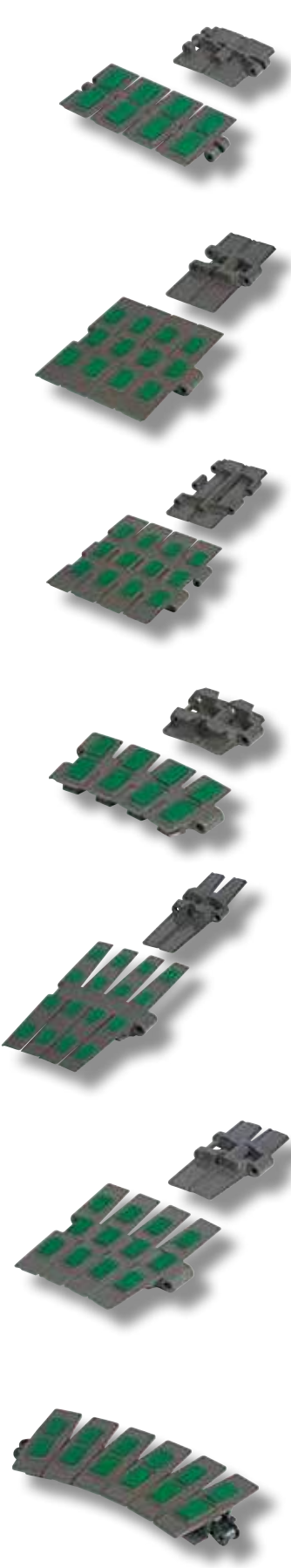
G 981M - Sideflexing Magnetic, Steel plates

Width		Pitch		Thickness		Sideflexing radius		Hinge		Materials	
Inches	mm	Inches	mm	Inches	mm	Inches	mm	Inches	mm	Plate	Rubber
3 1/4	82,6	1 1/2	38,1	0.118	3	18	457,2	1.693	43	P	PG
7 1/2	190,5	1 1/2	38,1	0.118	3	24	609,6	1.693	43	P	PG



HDG 9857M - Sideflexing Magnetic, Steel plates, Heavy duty single hinge, Heat treated pin

Width		Pitch		Thickness		Sideflexing radius		Hinge		Materials	
Inches	mm	Inches	mm	Inches	mm	Inches	mm	Inches	mm	Plate	Rubber
7 1/2	190,5	1 1/2	38,1	0.118	3	29.528	750	2.244	57	P	PG



HFX 820 - Straight running, Plastic plates, Single hinge

Width		Pitch		Thickness		Backflexing Radius		Hinge		Materials	
Inches	mm	Inches	mm	Inches	mm	Inches	mm	Inches	mm	Plate	Rubber
3 1/4	82,6	1 1/2	38,1	0.157	4	1.575	40	1.638	41,6	UP	Thermoplastic
4	101,6	1 1/2	38,1	0.157	4	1.575	40	1.638	41,6	UP	Thermoplastic
4 1/2	114,3	1 1/2	38,1	0.157	4	1.575	40	1.638	41,6	UP	Thermoplastic
6	152,4	1 1/2	38,1	0.157	4	1.575	40	1.638	41,6	UP	Thermoplastic
7.50	190,5	1 1/2	38,1	0.157	4	1.575	40	1.638	41,6	UP	Thermoplastic

HFX 8257 - Straight running, Plastic plates, Heavy duty single hinge

Width		Pitch		Thickness		Backflexing Radius		Hinge		Materials	
Inches	mm	Inches	mm	Inches	mm	Inches	mm	Inches	mm	Plate	Rubber
7 1/2	190,5	1 1/2	38,1	0.189	4,8	1.575	40	2.244	57	UP	Thermoplastic
10	254	1 1/2	38,1	0.189	4,8	1.575	40	2.244	57	UP	Thermoplastic
12	304,8	1 1/2	38,1	0.189	4,8	1.575	40	2.244	57	UP	Thermoplastic

HFX 821 - Straight running, Plastic plates, Double hinge

Width		Pitch		Thickness		Backflexing Radius		Hinge		Materials	
Inches	mm	Inches	mm	Inches	mm	Inches	mm	Inches	mm	Plate	Rubber
7 1/2	190,5	1 1/2	38,1	0.189	4,8	1.575	40	5.374	136,5	UP	Thermoplastic
10	254	1 1/2	38,1	0.189	4,8	1.575	40	5.374	136,5	UP	Thermoplastic
12	304,8	1 1/2	38,1	0.189	4,8	1.575	40	5.374	136,5	UP	Thermoplastic

HFX 880T - Sideflexing TAB, Plastic plates

Width		Pitch		Thickness		Sideflexing Radius		Hinge		Materials	
Inches	mm	Inches	mm	Inches	mm	Inches	mm	Inches	mm	Plate	Rubber
3 1/4	82,6	1 1/2	38,1	0.157	4	18	457,2	1.689	42,9	UP	Thermoplastic
4 1/2	114,3	1 1/2	38,1	0.157	4	19.685	500	1.689	42,9	UP	Thermoplastic

HFX 882T - Sideflexing TAB, Plastic plates, Heavy duty single hinge

Width		Pitch		Thickness		Sideflexing Radius		Hinge		Materials	
Inches	mm	Inches	mm	Inches	mm	Inches	mm	Inches	mm	Plate	Rubber
4 1/2	114,3	1 1/2	38,1	0.189	4,8	24	609,6	2.244	57	UP	Thermoplastic
7 1/2	190,5	1 1/2	38,1	0.189	4,8	24	609,6	2.244	57	UP	Thermoplastic
10	254	1 1/2	38,1	0.189	4,8	24	609,6	2.244	57	UP	Thermoplastic
12	304,8	1 1/2	38,1	0.189	4,8	24	609,6	2.244	57	UP	Thermoplastic

HFX 882M - Sideflexing Magnetic, Plastic plates, Heavy duty single hinge

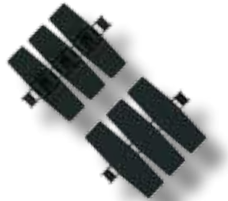
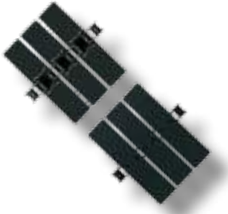
Width		Pitch		Thickness		Sideflexing Radius		Hinge		Materials	
Inches	mm	Inches	mm	Inches	mm	Inches	mm	Inches	mm	Plate	Rubber
7 1/2	190,5	1 1/2	38,1	0.189	4,8	24	609,6	2.244	57	UP	Thermoplastic
10	254	1 1/2	38,1	0.189	4,8	24	609,6	2.244	57	UP	Thermoplastic
12	304,8	1 1/2	38,1	0.189	4,8	24	609,6	2.244	57	UP	Thermoplastic

HFX 1873T - Two-piece, Sideflexing TAB, Plastic flight, 3/4" Pitch

Width		Pitch		Thickness		Sideflexing Radius		Hinge		Materials			
Inches	mm	Inches	mm	Inches	mm	Inches	mm	Inches	mm	Base chain	Flight	Rubber	
3 1/4	82,6	3/4	19,05	0.157	4	14	355,6	1.264	32,1	S	SS	UP	Thermoplastic
4 1/2	114,3	3/4	19,05	0.157	4	14	355,6	1.264	32,1	S	SS	UP	Thermoplastic
6	152,4	3/4	19,05	0.157	4	18	457,2	1.264	32,1	S	SS	UP	Thermoplastic
7 1/2	190,5	3/4	19,05	0.157	4	18	457,2	1.264	32,1	S	SS	UP	Thermoplastic
10	254	3/4	19,05	0.157	4	18	457,2	1.264	32,1	S	SS	UP	Thermoplastic
12	304,8	3/4	19,05	0.157	4	24	609,6	1.264	32,1	S	SS	UP	Thermoplastic

FliteTop®

Two-piece steel flights.



1864 - Straight Running

Width		Pitch		Thickness		Gap		Hinge		Materials			
Inches	mm	Inches	mm	Inches	mm	Inches	mm	Inches	mm	Base chain		Flight	
3 ¼	82,6	¾	19,05	0.118	3	0.126	3,2	1.063	27	S	SS	S	SS
4 ½	114,3	¾	19,05	0.118	3	0.126	3,2	1.063	27	S	SS	S	SS
6	152,4	¾	19,05	0.118	3	0.126	3,2	1.063	27	S	SS	S	SS
7 ½	190,5	¾	19,05	0.118	3	0.126	3,2	1.063	27	S	SS	S	SS

1874T - Sideflexing TAB, Flight Gap 8,2 mm

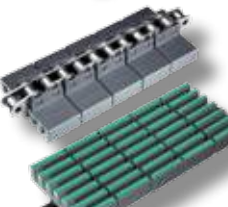
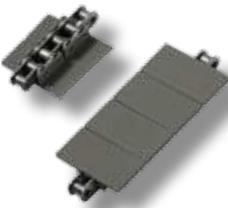
Width		Pitch		Thickness		Sideflexing Radius		Hinge		Materials			
Inches	mm	Inches	mm	Inches	mm	Inches	mm	Inches	mm	Base chain		Flight	
3 ¼	82,6	¾	19,05	0.118	3	15	381	1.252	31,8	S	SS	S	SS
4 ½	114,3	¾	19,05	0.118	3	15	381	1.252	31,8	S	SS	S	SS
6	152,4	¾	19,05	0.118	3	18	457,2	1.252	31,8	S	SS	S	SS
7 ½	190,5	¾	19,05	0.118	3	24	609,6	1.252	31,8	S	SS	S	SS

1874TM - Sideflexing TAB, Reduced Flight Gap (5,7 mm)

Width		Pitch		Thickness		Sideflexing Radius		Hinge		Materials			
Inches	mm	Inches	mm	Inches	mm	Inches	mm	Inches	mm	Base chain		Flight	
4 ½	114,3	¾	19,05	0.118	3	15	381	1.252	31,8	S	SS	S	SS

FliteTop®

Two-piece plastic flights.



843 - Straight Running, ½" Pitch

Width		Pitch		Thickness		Hinge		Materials			
Inches	mm	Inches	mm	Inches	mm	Inches	mm	Base chain		Flight	
1 3/8	34,9	½	12,7	0.126	3,2	0.811	20,6	S	SS	UP	
2	50,8	½	12,7	0.126	3,2	0.811	20,6	S	SS	UP	
3 ¼	82,6	½	12,7	0.126	3,2	0.811	20,6	S	SS	UP	

845 - Straight Running, ½" Pitch, Bidirectional

Width		Pitch		Thickness		Gap		Hinge		Materials			
Inches	mm	Inches	mm	Inches	mm	Inches	mm	Inches	mm	Base chain		Flight	
1 3/8	34,9	½	12,7	0.126	3,2	0.008	0,2	0.811	20,6	S	SS	UP	
1.57	40	½	12,7	0.126	3,2	0.008	0,2	0.811	20,6	S	SS	UP	
62	50,8	½	12,7	0.126	3,2	0.008	0,2	0.811	20,6	S	SS	UP	

RR 845 - Straight Running, ½" Pitch, Bidirectional, Raised Rib

Width		Pitch		Thickness		Gap		Hinge		Materials			
Inches	mm	Inches	mm	Inches	mm	Inches	mm	Inches	mm	Base chain		Flight	
1.57	40	½	12,7	0.480	12,2	0.008	0,2	0.811	20,6	S*	UP	PP	
2.11	53,6	½	12,7	0.480	12,2	0.008	0,2	0.11	20,6	S*	UP	PP	

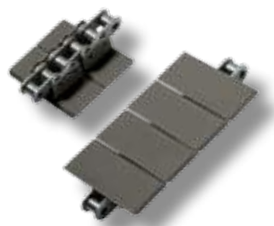
*with FDA nickel plating

NEW

HF RR 845 - Straight running, ½" Pitch, Bidirectional, Rubberized raised rib

Width		Pitch		Thickness		Gap		Hinge		Materials			
Inches	mm	Inches	mm	Inches	mm	Inches	mm	Inches	mm	Base chain		Flight	
1.52	38,5	½	12,7	0.480	12,2	0.016	0,4	0.811	20,6	S*	PP	Thermo plastic	
2.19	55,5	½	12,7	0.480	12,2	0.016	0,4	0.811	20,6	S*	PP	Thermo plastic	

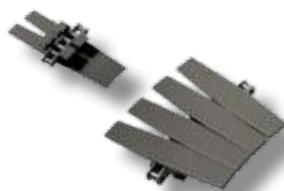
*with FDA nickel plating



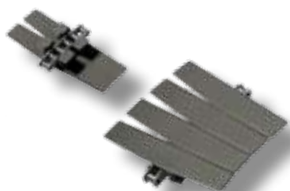
863 - Straight Running, 3/4" Pitch										
Width		Pitch		Thickness		Hinge		Materials		
Inches	mm	Inches	mm	Inches	mm	Inches	mm	Base chain		Flight
3 1/4	82,6	3/4	19,05	0.157	4	1.343	34	S	SS	UP
4,5	114,3	3/4	19,05	0.157	4	1.343	34	S	SS	UP
6	152,4	3/4	19,05	0.157	4	1.343	34	S	SS	UP
7 1/2	190,5	3/4	19,05	0.157	4	1.343	34	S	SS	UP



1843T - Sideflexing TAB, 1/2" Pitch													
Width		Pitch		Thickness		Sideflexing Radius		Hinge		Materials			
Inches	mm	Inches	mm	Inches	mm	Inches	mm	Inches	mm	Base chain		Flight	
1 1/4	31,8	1 1/2	12,7	0.126	3,2	10	254	0.787	20	S	SS	UP	AR



1873T - Sideflexing TAB, 3/4" Pitch												
Width		Pitch		Thickness		Sideflexing Radius		Hinge		Materials		
Inches	mm	Inches	mm	Inches	mm	Inches	mm	Inches	mm	Base chain		Flight
3 1/4	82,6	3/4	19,05	0.157	4	14	355,6	1.264	32,1	S	SS	UP
4 1/2	114,3	3/4	19,05	0.157	4	14	355,6	1.264	32,1	S	SS	UP
6	152,4	3/4	19,05	0.157	4	18	457,2	1.264	32,1	S	SS	UP
7 1/2	190,5	3/4	19,05	0.157	4	18	457,2	1.264	32,1	S	SS	UP
10	254	3/4	19,05	0.157	4	18	457,2	1.264	32,1	S	SS	UP
12	304,8	3/4	19,05	0.157	4	24	690,6	1.264	32,1	S	SS	UP

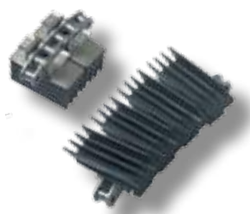


1863T - Sideflexing TAB, 3/4" Pitch, Reduced Flight Gap													
Width		Pitch		Thickness		Sideflexing Radius		Hinge		Materials			
Inches	mm	Inches	mm	Inches	mm	Inches	mm	Inches	mm	Base chain		Flight	
2 1/4	57,1	3/4	19,05	0.157	4	18	457,2	1.264	32,1	S	SS	UP	
3 1/4	82,6	3/4	19,05	0.157	4	18	457,2	1.264	32,1	S	SS	UP	AR
4 1/2	114,3	3/4	19,05	0.157	4	18	457,2	1.264	32,1	S	SS	UP	AR
7 1/2	190,5	3/4	19,05	0.157	4	18	609,6	1.264	32,1	S	SS	UP	
12	304,8	3/4	19,05	0.157	4	18	609,6	1.264	32,1	S	SS	UP	
16	406,4	3/4	19,05	0.157	4	29.528	750	1.264	32,1	S	SS	UP	

FliteTop® Gripper chains.



GV 1874T - Two-Piece Gripper Chains, 3/4" Pitch, Steel Flights, Short Fingers														
Width		Pitch		Thickness		Sideflexing Radius		Hinge		Materials				
Inches	mm	Inches	mm	Inches	mm	Inches	mm	Inches	mm	Base chain		Flight		Rubber
3 1/4	82,6	3/4	19,05	0.118	3	15	381	1.252	31,8	S	SS	S	SS	EPDM
4 1/2	114,3	3/4	19,05	0.118	3	15	381	1.252	31,8	S	SS	S	SS	EPDM



EV 1874T - Two-Piece Gripper Chains, 3/4" Pitch, Steel Flights, Long Fingers														
Width		Pitch		Thickness		Sideflexing Radius		Hinge		Materials				
Inches	mm	Inches	mm	Inches	mm	Inches	mm	Inches	mm	Base chain		Flight		Rubber
3 1/4	82,6	3/4	19,05	0.118	3	15	381	1.252	31,8	S	SS	S	SS	EPDM

RANGE EXTENSION

GW 1873T - Two-Piece Gripper Chains, 3/4" Pitch, Plastic Flights, Short Fingers

Width		Pitch		Thickness		Sideflexing Radius		Hinge		Materials					
Inches	mm	Inches	mm	Inches	mm	Inches	mm	Inches	mm	Base chain	Flight	Rubber			
3 1/4	82,6	3/4	19,05	0.157	4	14	355,6	1.264	32,1	S	BS	SS	UP	DK ²	Thermo plastic

NEW Maintenance free base chain

RANGE EXTENSION

EW 1873T - Two-Piece Gripper Chains, 3/4" Pitch, Plastic Flights, Long Fingers

Width		Pitch		Thickness		Sideflexing Radius		Hinge		Materials					
Inches	mm	Inches	mm	Inches	mm	Inches	mm	Inches	mm	Base chain	Flight	Rubber			
3 1/4	82,6	3/4	19,05	0.157	4	14	355,6	1.264	32,1	S	BS	SS	UP	DK ²	Thermo plastic
4 1/2	114,3	3/4	19,05	0.157	4	14	355,6	1.264	32,1	S	BS	SS	UP	DK ²	Thermo plastic

NEW Maintenance free base chain

RANGE EXTENSION

GD 1873T - Two-piece gripper chain, 3/4" Pitch, Plastic flights, D-Shape

Width		Pitch		Thickness		Sideflexing radius		Hinge		Materials					
Inches	mm	Inches	mm	Inches	mm	Inches	mm	Inches	mm	Base chain	Flight	Rubber			
3 1/4	82,6	3/4	19,05	0.157	4	14	355,6	1.264	32,1	S	BS	SS	UP	DK ²	Thermo plastic
NEW 7 1/2	190,5	3/4	19,05	0.157	4	18	457,2	1.264	32,1			SS	UP		Thermo plastic

NEW Maintenance free base chain

GU 1873T - Two-Piece Gripper Chains, 3/4" Pitch, Plastic Flights, U-Shape

Width		Pitch		Thickness		Sideflexing Radius		Hinge		Materials				
Inches	mm	Inches	mm	Inches	mm	Inches	mm	Inches	mm	Base chain	Flight	Rubber		
3 1/4	82,6	3/4	19,05	0.157	4	14	355,6	1.264	32,1	S	SS	UP	DK ²	Thermo plastic
4 1/2	114,3	3/4	19,05	0.157	4	14	355,6	1.264	32,1	S	SS	UP	DK ²	Thermo plastic

NEW

EW 1843T - Two-Piece Gripper Chains, 1/2" Pitch, Plastic Flights, Long Fingers

Width		Pitch		Thickness		Sideflexing Radius		Hinge		Materials			
Inches	mm	Inches	mm	Inches	mm	Inches	mm	Inches	mm	Base chain	Flight	Rubber	
1 1/2	38,1	1/2	12,7	0.130	3,2	10	254	1.264	32,1	S	SS	UP	Thermo plastic

GW 878T - One-Piece Gripper Chains, Plastic Plates, Short Fingers

Width		Pitch		Thickness		Sideflexing Radius		Hinge		Materials	
Inches	mm	Inches	mm	Inches	mm	Inches	mm	Inches	mm	Flight	Rubber
3 1/4	82,6	1 1/2	38,1	0.189	4,8	7.874	200	1.689	42,9	UP	Thermo plastic

EW 878T - One-Piece Gripper Chains, Plastic Plates, Long Fingers

Width		Pitch		Thickness		Sideflexing Radius		Hinge		Materials	
Inches	mm	Inches	mm	Inches	mm	Inches	mm	Inches	mm	Flight	Rubber
3 1/4	82,6	1 1/2	38,1	0.189	4,8	7.874	200	1.689	42,9	UP	Thermo plastic

GD 878T - One-Piece Gripper Chains, Plastic Plates, D-Shape

Width		Pitch		Thickness		Sideflexing Radius		Hinge		Materials	
Inches	mm	Inches	mm	Inches	mm	Inches	mm	Inches	mm	Flight	Rubber
3 1/4	82,6	1 1/2	38,1	0.189	4,8	7.874	200	1.689	42,9	UP	Thermo plastic

GU 878T - One-Piece Gripper Chains, Plastic Plates, U-Shape

Width		Pitch		Thickness		Sideflexing Radius		Hinge		Materials	
Inches	mm	Inches	mm	Inches	mm	Inches	mm	Inches	mm	Flight	Rubber
3 1/4	82,6	1 1/2	38,1	0.189	4,8	7.874	200	1.689	42,9	UP	Thermo plastic

FliteTop®

LBP chains (Low Back-Line Pressure).



LBP 821 - Straight Running, Double Hinge											
Width		Pitch		Thickness		Backflexing Radius		Hinge		Materials	
Inches	mm	Inches	mm	Inches	mm	Inches	mm	Inches	mm	Plate	Roller
7 ½	190,5	1 ½	38,1	0.189	4,8	9.055	230	5.374	136,5	UP	UP
10	254	1 ½	38,1	0.189	4,8	9.055	230	5.374	136,5	UP	UP
12	304,8	1 ½	38,1	0.189	4,8	9.055	230	5.374	136,5	UP	UP



LBP 8257 - Straight Running, Heavy Duty Single Hinge											
Width		Pitch		Thickness		Backflexing Radius		Hinge		Materials	
Inches	mm	Inches	mm	Inches	mm	Inches	mm	Inches	mm	Plate	Roller
7 ½	190,5	1 ½	38,1	0.189	4,8	11.811	300	2.244	57	UP	UP
10	254	1 ½	38,1	0.189	4,8	11.811	300	2.244	57	UP	UP
12	304,8	1 ½	38,1	0.189	4,8	11.811	300	2.244	57	UP	UP



LBP 882T - Sideflexing TAB, Heavy Duty Single Hinge											
Width		Pitch		Thickness		Sideflexing Radius		Hinge		Materials	
Inches	mm	Inches	mm	Inches	mm	Inches	mm	Inches	mm	Plate	Roller
3 ¾	95,3	1 ½	38,1	0.189	4,8	26.260	667	2.244	57	UP	UP
4 ½	114,3	1 ½	38,1	0.189	4,8	24	609,6	2.244	57	UP	UP
7 ½	190,5	1 ½	38,1	0.189	4,8	24	609,6	2.244	57	UP	UP
10	254	1 ½	38,1	0.189	4,8	24	609,6	2.244	57	UP	UP
12	304,8	1 ½	38,1	0.189	4,8	24	609,6	2.244	57	UP	UP



LBP 882M - Sideflexing Magnetic, Heavy Duty Single Hinge											
Width		Pitch		Thickness		Sideflexing Radius		Hinge		Materials	
Inches	mm	Inches	mm	Inches	mm	Inches	mm	Inches	mm	Plate	Roller
7 ½	190,5	1 ½	38,1	0.189	4,8	24	609,6	2.244	57	UP	UP
10	254	1 ½	38,1	0.189	4,8	24	609,6	2.244	57	UP	UP
12	304,8	1 ½	38,1	0.189	4,8	24	609,6	2.244	57	UP	UP

FliteTop®

Biplanar chains.



1700 - Sideflexing, Increased Product Support Surface											
Width		Pitch		Thickness		Sideflexing Radius		Backflexing Radius		Materials	
Inches	mm	Inches	mm	Inches	mm	Inches	mm	Inches	mm	Link	
2.17	55	1.97	50	0.157	4	5.512	140	1.969	50	UP	DK ² WA



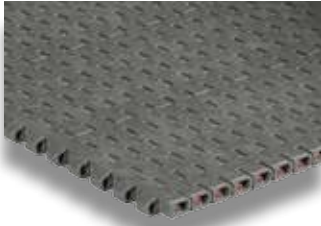
1702 - Sideflexing											
Width		Pitch		Thickness		Sideflexing Radius		Backflexing Radius		Materials	
Inches	mm	Inches	mm	Inches	mm	Inches	mm	Inches	mm	Link	
2.09	53	1.97	50	0.197	5	5.512	140	1.969	50	WA	



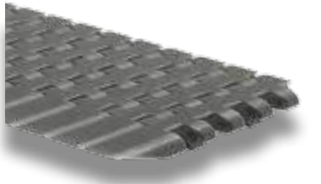
1701T - Sideflexing TAB											
Width		Pitch		Thickness		Sideflexing Radius		Backflexing Radius		Materials	
Inches	mm	Inches	mm	Inches	mm	Inches	mm	Inches	mm	Link	
2.09	53	1.97	50	0.197	5	5.512	140	1.969	50	UP	DK ² WA

Matveyor®

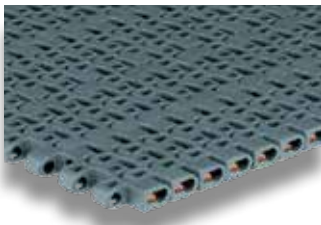
Light duty short pitch.



600 - Modular Belts and Dedicated Widths, Metric Standard, Solid Top										
Width		Pitch		Thickness		Tracking Guide		Surface	Materials	
Inches	mm	Inches	mm	Inches	mm				Module	
3.35	85	½	12,7	0.343	8,7	Yes		Solid	UP	DK ² PP
6.69" (170 mm) or wider in 3.35" (85 mm) increments		½	12,7	0.343	8,7	Yes		Solid	UP	DK ² PP



600G ATM - Active Transfer Modules, Metric Standard, Solid Top										
Width		Pitch		Thickness		Tracking guide		Surface	Materials	
	Inches	mm	Inches	mm	Inches	mm			Module	
Left version	4.33	110	½	12,7	0.343	8,7	Yes	Solid	UP	DK ²
Right version	4.33	110	½	12,7	0.343	8,7	Yes	Solid	UP	DK ²



500 - Modular Belts and Dedicated Widths, Metric Standard, Flush Grid										
Width		Pitch		Thickness		Tracking Guide		Surface	Materials	
Inches	mm	Inches	mm	Inches	mm				Module	
3.35	85	½	12,7	0.343	8,7	Yes		Flush Grid	UP	PP
6.69" (170 mm) or wider in 3.35" (85 mm) increments		½	12,7	0.343	8,7	Yes		Flush Grid	UP	PP



HF 500 - Modular Belts and Dedicated Widths, Metric Standard, Rubberized surface, Full Cover										
Width		Pitch		Thickness		Tracking Guide		Surface	Materials	
Inches	mm	Inches	mm	Inches	mm				Module	Rubber
2	50,8	½	12,7	0.343	8,7	No		Rubber	PP	Thermo plastic
3.35	85	½	12,7	0.343	8,7	Yes		Rubber	PP	Thermo plastic
6.69" (170 mm) or wider in 3.35" (85 mm) increments		½	12,7	0.343	8,7	Yes		Rubber	PP	Thermo plastic



NEW 300 - Modular Belts and Dedicated Widths, Inch Standard, Solid Top										
Width		Pitch		Thickness		Tracking guide		Surface	Materials	
Inches	mm	Inches	mm	Inches	mm				Module	
3	76,2	½	12,7	0.343	8,7	No		Solid	UP	DK ² PP
4 ½	114,3	½	12,7	0.343	8,7	Yes		Solid	UP	DK ² PP
6" (152,4 mm) or wider in 3" (76,2 mm) increments		½	12,7	0.343	8,7	No		Solid	UP	DK ² PP



NEW 300G ATM - Active Transfer Modules, Inch Standard, Solid Top										
Width		Pitch		Thickness		Tracking guide		Surface	Materials	
	Inches	mm	Inches	mm	Inches	mm			Module	
Left version	6.30	160	½	12,7	0.343	8,7	Yes	Solid	UP	DK ²
Right version	6.30	160	½	12,7	0.343	8,7	Yes	Solid	UP	DK ²



NEW 200 - Modular Belts and Dedicated Widths, Inch Standard, Flush Grid										
Width		Pitch		Thickness		Tracking guide		Surface	Materials	
Inches	mm	Inches	mm	Inches	mm				Module	
3	76,2	½	12,7	0.343	8,7	No		Flush grid	UP	PP
6" (152,4 mm) or wider in 3" (76,2 mm) increments		½	12,7	0.343	8,7	No		Flush grid	UP	PP



NEW HF 200 - Modular Belts and Dedicated Widths, Inch Standard, Rubberized Surface, Full Cover

Width		Pitch		Thickness		Tracking guide		Surface		Materials		
Inches	mm	Inches	mm	Inches	mm					Module		Rubber
3	76,2	½	12,7	0.343	8,7	No		Rubber		UP	PP	Thermo plastic
6" (152,4 mm) or wider in 3" (76,2 mm) increments		½	12,7	0.343	8,7	No		Rubber		UP	PP	Thermo plastic

Matveyor® Light duty.



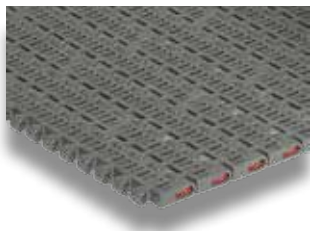
1600 - Modular Belts and Dedicated Widths, Metric Standard, Solid Top

Width		Pitch		Thickness		Tracking Guide		Surface		Materials		
Inches	mm	Inches	mm	Inches	mm					Module		
3.30	83,8	1	25,4	0.343	8,7	Yes		Solid		UP		DK ²
3.35	85	1	25,4	0.343	8,7	Yes		Solid		UP		DK ²
6.69" (170 mm) or wider in 3.35" (85 mm) increments		1	25,4	0.343	8,7	Yes		Solid		UP		DK ²



1600G ATM - Active Transfer Modules, Metric Standard, Solid Top

Width		Pitch		Thickness		Tracking guide		Surface		Materials			
		Inches	mm	Inches	mm	Inches	mm			Module			
Left version		4.33	110	1	25,4	0.343	8,7	Yes		Solid		UP	DK ²
Right version		4.33	110	1	25,4	0.343	8,7	Yes		Solid		UP	DK ²
Right version		7.68	195	1	25,4	0.343	8,7	Yes		Solid		UP	DK ²



1500 - Modular Belts and Dedicated Widths, Metric Standard, Flush Grid

Width		Pitch		Thickness		Tracking Guide		Surface		Materials		
Inches	mm	Inches	mm	Inches	mm					Module		
3.35	85	1	25,4	0.343	8,7	Yes		Flush Grid		UP		DK ²
6.69" (170 mm) or wider in 3.35" (85 mm) increments		1	25,4	0.343	8,7	Yes		Flush Grid		UP		DK ²



1500G ATM - Active Transfer Modules, Metric Standard, Flush Grid

Width		Pitch		Thickness		Tracking guide		Surface		Materials			
		Inches	mm	Inches	mm	Inches	mm			Module			
Right version		7.68	195	1	25,4	0.343	8,7	Yes		Flush grid		UP	DK ²



NEW RR 1500 - Modular Belts, Metric Standard, Raised Rib

Width		Pitch		Thickness		Tracking Guide		Surface		Materials		
Inches	mm	Inches	mm	Inches	mm					Module		
6.69" (170 mm) or wider in 3.35" (85 mm) increments		1	25,4	0.562	14,3	No		Raised Rib		UP		



RR 1600 - Dedicated Widths, Raised Rib									
Width		Pitch		Thickness		Tracking Guide	Surface	Materials	
Inches	mm	Inches	mm	Inches	mm			Module	
1.18	30	1	25,4	0.563	14,3	No	Raised Rib	UP	PP
1.52	38,5	1	25,4	0.563	14,3	No	Raised Rib	UP	PP
1.85	47	1	25,4	0.563	14,3	No	Raised Rib	UP	PP
2.28	58	1	25,4	0.563	14,3	No	Raised Rib	UP	PP



NEW HF 1600 - Modular Belts and Dedicated Widths, Metric Standard, Rubberized Surface, Full Cover										
Width		Pitch		Thickness		Tracking guide	Surface	Materials		Rubber
Inches	mm	Inches	mm	Inches	mm			Module		
3.35	85	1	25,4	0.343	8,7	Yes	Rubber	UP	PP	Thermo plastic
6.69" (170 mm) or wider in 3.35" (85 mm) increments		1	25,4	0.343	8,7	Yes	Rubber	up	PP	Thermo plastic



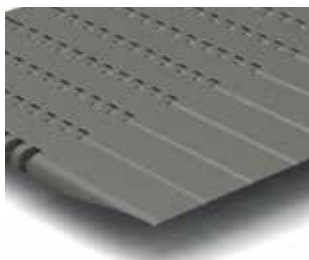
NEW HFS 1600 - Modular Belts, Metric Standard, Rubberized Surface, Side Indent										
Width		Pitch		Thickness		Tracking guide	Surface	Materials		Rubber
Inches	mm	Inches	mm	Inches	mm			Module		
10.04" (255 mm) or wider in 3.35" (85 mm) increments		1	25,4	0.343	8,7	Yes	Rubber	UP	PP	Thermo plastic
		1	25,4	0.343	8,7	Yes	Rubber	UP	PP	Thermo plastic



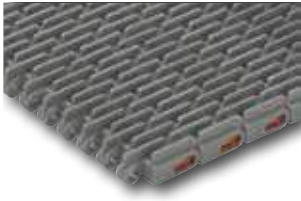
7300 - Modular Belts and Dedicated Widths, Inch Standard, Solid Top									
Width		Pitch		Thickness		Tracking Guide	Surface	Materials	
Inches	mm	Inches	mm	Inches	mm			Module	
3 ¼	82,6	¾	19,05	0.343	8,7	Yes	Solid	UP	DK ²
4 ½	114,3	¾	19,05	0.343	8,7	Yes	Solid	UP	DK ²
6	152,4	¾	19,05	0.343	8,7	Yes	Solid	UP	DK ²
7 ½	190,5	¾	19,05	0.343	8,7	Yes	Solid	UP	DK ²
9" (228,6mm) or wider in 3" (76,2mm) increments		¾	19,05	0.343	8,7	No	Solid	UP	DK ²



7200 - Modular Belts and Dedicated Widths, Inch Standard, Flush Grid									
Width		Pitch		Thickness		Tracking Guide	Surface	Materials	
Inches	mm	Inches	mm	Inches	mm			Module	
3 ¼	82,6	¾	19,05	0.343	8,7	Yes	Flush Grid	UP	DK ²
4 ½	114,3	¾	19,05	0.343	8,7	Yes	Flush Grid	UP	DK ²
6	152,4	¾	19,05	0.343	8,7	Yes	Flush Grid	UP	DK ²
7 ½	190,5	¾	19,05	0.343	8,7	Yes	Flush Grid	UP	DK ²
9" (228,6mm) or wider in 3" (76,2mm) increments		¾	19,05	0.343	8,7	No	Flush Grid	UP	DK ²



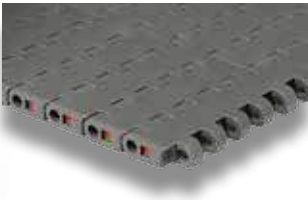
7300G ATM - Active Transfer Modules, Inch Standard, Solid Top										
	Width		Pitch		Thickness		Tracking Guide	Surface	Materials	
	Inches	mm	Inches	mm	Inches	mm			Module	
Left version	6.3	160	¾	19,05	0.343	8,7	Yes	Solid	UP	DK ²
Right version	6.3	160	¾	19,05	0.343	8,7	Yes	Solid	UP	DK ²
Left version	9.3	236,2	¾	19,05	0.343	8,7	Yes	Solid	UP	DK ²
Right version	9.3	236,2	¾	19,05	0.343	8,7	Yes	Solid	UP	DK ²



1110 - Modular Belts, Inch Standard, Raised Rib

Width		Pitch		Thickness		Tracking Guide		Surface		Materials	
Inches	mm	Inches	mm	Inches	mm					Module	
6" (152,4 mm) or wider in 3" (76,2 mm) increments		1	25,4	0.591	15	No		Raised Rib		PP	

Matveyor® Heavy duty.



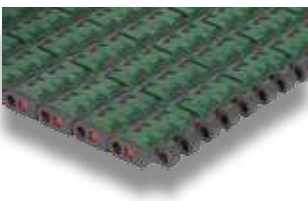
USPM - Modular Belts and Dedicated Widths, Metric Standard, Solid Top

Width		Pitch		Thickness		Tracking Guide		Surface		Materials		
Inches	mm	Inches	mm	Inches	mm					Module		
3.30	83,8	1	25,4	0.500	12,7	Yes		Solid		UP		AR
6.69" (170 mm) or wider in 3.35"		1	25,4	0.500	12,7	Yes		Solid		UP		AR



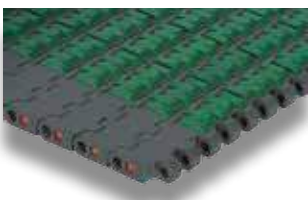
USPMG ATM - Active Transfer Modules, Metric Standard, Solid Top

Width		Pitch		Thickness		Tracking guide		Surface		Materials			
	Inches	mm	Inches	mm	Inches	mm				Module			
Left version	5.02	127,5	1	25,4	0.500	12,7	Yes		Solid		UP		AR
Right version	5.02	127,5	1	25,4	0.500	12,7	Yes		Solid		UP		AR



HF USPM - Modular Belts and Dedicated Widths, Metric Standard, Rubberized Surface, Full Cover

Width		Pitch		Thickness		Tracking Guide		Surface		Materials		
Inches	mm	Inches	mm	Inches	mm					Module		Rubber
3.35	85	1	25,4	0.500	12,7	Yes		Rubber		UP	PP	Thermo plastic
6.69" (170 mm) or wider in 3.35" (85 mm) increments		1	25,4	0.500	12,7	Yes		Rubber		UP	PP	Thermo plastic



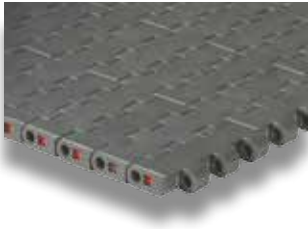
HFS USPM - Modular Belts, Metric Standard, Rubberized Surface, Side Indent

Width		Pitch		Thickness		Tracking Guide		Surface		Materials		
Inches	mm	Inches	mm	Inches	mm					Module		Rubber
10.04" (255 mm) or wider in 3.35" (85 mm) increments		1	25,4	0.500	12,7	Yes		Rubber		UP	PP	Thermo plastic



LBP USPM - Modular Belts and Dedicated Widths, Metric Standard, LBP Rollers

Width		Pitch		Thickness		Tracking Guide		Surface		Materials		
Inches	mm	Inches	mm	Inches	mm					Module	Roller	
3.35	85	1	25,4	0.500	12,7	Yes		Rollers		UP	UP	
6.69" (170 mm) or wider in 3.35" (85 mm) increments		1	25,4	0.500	12,7	Yes		Rollers		UP	UP	



USP - Modular Belts and Dedicated Widths, Inch Standard, Solid Top											
Width		Pitch		Thickness		Tracking Guide	Surface	Materials			
Inches	mm	Inches	mm	Inches	mm			Module			
3 ¼	82,6	1	25,4	0.500	12,7	Yes	Solid	UP	DK ²	AR	
4 ½	114,3	1	25,4	0.500	12,7	Yes	Solid	UP	DK ²	AR	
7 ½	190,5	1	25,4	0.500	12,7	Yes	Solid	UP	DK ²	AR	
6" (152,4 mm) or wider in 3" (76,2 mm) increments		1	25,4	0.500	12,7	No	Solid	UP	DK ²	AR	

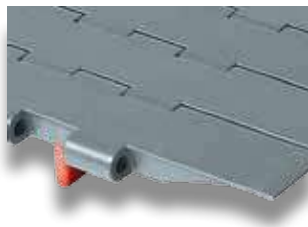


USPG ATM - Active Transfer Modules, Inch Standard, Solid Top											
	Width		Pitch		Thickness		Tracking guide	Surface	Materials		
	Inches	mm	Inches	mm	Inches	mm			Module		
Left version	6	152,4	1	25,4	0.500	12,7	Yes	Solid	UP	DK ²	AR
Left version	9	228,6	1	25,4	0.500	12,7	Yes	Solid	UP	DK ²	AR
Right version	6	152,4	1	25,4	0.500	12,7	Yes	Solid	UP	DK ²	AR
Right version	9	228,6	1	25,4	0.500	12,7	Yes	Solid	UP	DK ²	AR

Matveyor® ULTOP® Heavy duty UCC.



UCC - Dedicated Widths, Inch Standard, Solid Top											
Width		Pitch		Thickness		Tracking Guide	Surface	Materials			
Inches	mm	Inches	mm	Inches	mm			Module			
3 ¼	82,6	1 ½	38,1	0.500	12,7	No	Solid	DK ²	ULF		
4 ½	114,3	1 ½	38,1	0.500	12,7	No	Solid	DK ²	ULF		
6	152,4	1 ½	38,1	0.500	12,7	No	Solid	DK ²	ULF		
7 ½	190,5	1 ½	38,1	0.500	12,7	No	Solid	DK ²	ULF		
12	304,8	1 ½	38,1	0.500	12,7	No	Solid	DK ²	ULF		
15	381,0	1 ½	38,1	0.500	12,7	No	Solid	DK ²	ULF		
18	457,2	1 ½	38,1	0.500	12,7	No	Solid	DK ²	ULF		
24	609,6	1 ½	38,1	0.500	12,7	No	Solid	DK ²	ULF		



UCCG ATM - Active Transfer Modules, Inch Standard, Solid Top											
Width		Pitch		Thickness		Tracking Guide	Surface	Materials			
Inches	mm	Inches	mm	Inches	mm			Module			
6 ½	165,1	1 ½	38,1	0.500	12,7	Yes	Solid	DK ²	ULF		
9 ½	241,3	1 ½	38,1	0.500	12,7	Yes	Solid	DK ²	ULF		



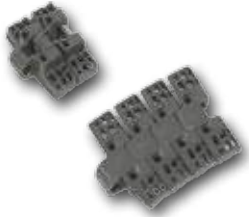
UCC 138 - Dedicated Widths, Inch Standard, Solid Top											
Width		Pitch		Thickness		Tracking Guide	Surface	Materials			
Inches	mm	Inches	mm	Inches	mm			Module			
1.40	34,9	¾	19,05	0.591	15	No	Solid	ULF			

Matveyor®

Sideflexing chains.



783M - Magnetic, Solid Top, Light Duty										
Width		Pitch		Thickness		Sideflexing radius		Surface	Materials	
Inches	mm	Inches	mm	Inches	mm	Inches	mm		Plate	
3.30	83,8	1	25,4	0.343	8,7	19.685	500	Solid	UP	DK ²



782M - Magnetic, Flush Grid, Light Duty										
Width		Pitch		Thickness		Sideflexing radius		Surface	Materials	
Inches	mm	Inches	mm	Inches	mm	Inches	mm		Plate	
3.30	83,8	1	25,4	0.343	8,7	19.685	500	Flush Grid	UP	DK ²



783T - TAB, Solid Top, Light Duty										
Width		Pitch		Thickness		Sideflexing radius		Surface	Materials	
Inches	mm	Inches	mm	Inches	mm	Inches	mm		Plate	
3 ¼	82,6	1	25,4	0.343	8,7	18	457,2	Solid	UP	DK ²
3.30	83,8	1	25,4	0.343	8,7	18	457,2	Solid	UP	DK ²
4 ½	114,3	1	25,4	0.343	8,7	24	609,6	Solid	UP	DK ²



793M - Magnetic, Solid Top, Heavy Duty										
Width		Pitch		Thickness		Sideflexing radius		Surface	Materials	
Inches	mm	Inches	mm	Inches	mm	Inches	mm		Plate	
3.30	83,8	1	25,4	0.500	12,7	19.685	500	Solid	UP	DK ² AR
4 ½	114,3	1	25,4	0.500	12,7	19.685	500	Solid	UP	DK ² AR



793T - TAB, Solid Top, Heavy Duty										
Width		Pitch		Thickness		Sideflexing radius		Surface	Materials	
Inches	mm	Inches	mm	Inches	mm	Inches	mm		Plate	
3 ¼	82,6	1	25,4	0.500	12,7	18	457,2	Solid	UP	DK ² AR
3.30	83,8	1	25,4	0.500	12,7	18	457,2	Solid	UP	DK ² AR
4 ½	114,3	1	25,4	0.500	12,7	24	609,6	Solid	UP	DK ² AR



NEW 793L - Low center chain, Solid Top, Heavy Duty										
Width		Pitch		Thickness		Sideflexing radius		Surface	Materials	
Inches	mm	Inches	mm	Inches	mm	Inches	mm		Plate	
4 ½	114,3	1	25,4	0.500	12,7	19.685	500	Solid	UP	DK ²

Matveyor®

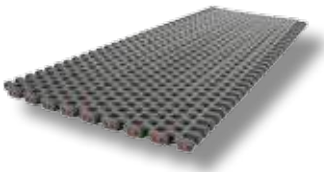
Heavy duty raised rib.



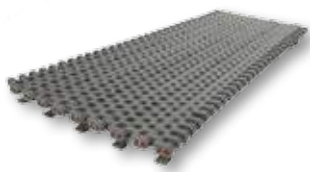
3120 - Modular Belts, Inch Standard, Raised Rib									
Width		Pitch		Thickness		Tracking Guide		Surface	Materials
Inches	mm	Inches	mm	Inches	mm				Module
12" (304,8mm) or wider in 3" (76,2mm) increments		2	50,8	0.941	23,9	No		Raised Rib	PP

Matveyor®

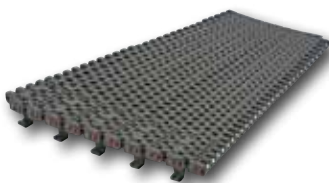
Heavy duty sideflexing belts.



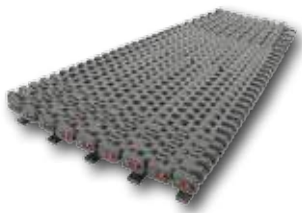
2555 - Modular Belts, Metric Standard									
Width		Pitch		Thickness		Medium Sideflexing Radius		Surface	Materials
Inches	mm	Inches	mm	Inches	mm	Inches	mm		Module
10.04	255	1 ¼	31,75	0.500	12,7	23.622	600	Flush Grid	UP
13.39	340	1 ¼	31,75	0.500	12,7	31.496	800	Flush Grid	UP
16.73	425	1 ¼	31,75	0.500	12,7	39.370	1000	Flush Grid	UP
20.08	510	1 ¼	31,75	0.500	12,7	47.244	1200	Flush Grid	UP
23.43	595	1 ¼	31,75	0.500	12,7	55.118	1400	Flush Grid	UP
26.77	680	1 ¼	31,75	0.500	12,7	62.992	1600	Flush Grid	UP
30.12	765	1 ¼	31,75	0.500	12,7	70.866	1800	Flush Grid	UP
33.46	850	1 ¼	31,75	0.500	12,7	78.740	2000	Flush Grid	UP



2555T - Modular Belts, Metric Standard, TAB									
Width		Pitch		Thickness		Medium Sideflexing Radius		Surface	Materials
Inches	mm	Inches	mm	Inches	mm	Inches	mm		Module
10.04	255	1 ¼	31,75	0.500	12,7	23.622	600	Flush Grid	UP
13.39	340	1 ¼	31,75	0.500	12,7	31.496	800	Flush Grid	UP
16.73	425	1 ¼	31,75	0.500	12,7	39.370	1000	Flush Grid	UP
20.08	510	1 ¼	31,75	0.500	12,7	47.244	1200	Flush Grid	UP
23.43	595	1 ¼	31,75	0.500	12,7	55.118	1400	Flush Grid	UP
26.77	680	1 ¼	31,75	0.500	12,7	62.992	1600	Flush Grid	UP
30.12	765	1 ¼	31,75	0.500	12,7	70.866	1800	Flush Grid	UP
33.46	850	1 ¼	31,75	0.500	12,7	78.740	2000	Flush Grid	UP

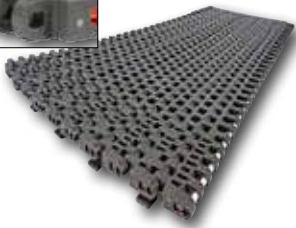


2555HT - Modular Belts, Metric Standard, TAB, Reinforced Outer Modules									
Width		Pitch		Thickness		Medium Sideflexing Radius		Surface	Materials
Inches	mm	Inches	mm	Inches	mm	Inches	mm		Module
10.04	255	1 ¼	31,75	0.500	12,7	23.622	600	Flush Grid	UP
13.39	340	1 ¼	31,75	0.500	12,7	31.496	800	Flush Grid	UP
16.73	425	1 ¼	31,75	0.500	12,7	39.370	1000	Flush Grid	UP
20.08	510	1 ¼	31,75	0.500	12,7	47.244	1200	Flush Grid	UP
23.43	595	1 ¼	31,75	0.500	12,7	55.118	1400	Flush Grid	UP
26.77	680	1 ¼	31,75	0.500	12,7	62.992	1600	Flush Grid	UP
30.12	765	1 ¼	31,75	0.500	12,7	70.866	1800	Flush Grid	UP
33.46	850	1 ¼	31,75	0.500	12,7	78.740	2000	Flush Grid	UP



2555HT-SR - Modular Belts, Metric Standard, TAB, Reinforced Outer Modules, Reduced Sideflexing Radius

Width		Pitch		Thickness		Medium Sideflexing Radius		Surface	Materials
Inches	mm	Inches	mm	Inches	mm	Inches	mm		Module
13.39	340	1 ¼	31,75	0.500	12,7	19.685	500	Flush Grid	UP
16.73	425	1 ¼	31,75	0.500	12,7	23.622	600	Flush Grid	UP
20.08	510	1 ¼	31,75	0.500	12,7	31.496	800	Flush Grid	UP
23.43	595	1 ¼	31,75	0.500	12,7	39.370	1000	Flush Grid	UP
26.77	680	1 ¼	31,75	0.500	12,7	47.244	1200	Flush Grid	UP
30.12	765	1 ¼	31,75	0.500	12,7	55.118	1400	Flush Grid	UP
33.46	850	1 ¼	31,75	0.500	12,7	62.992	1600	Flush Grid	UP



2555HTB - Modular Belts, Metric Standard, TAB+ Bearing, Reinforced Outer Module

Width		Pitch		Thickness		Medium Sideflexing Radius		Surface	Materials
Inches	mm	Inches	mm	Inches	mm	Inches	mm		Module
10.04	255	1 ¼	31,75	0.500	12,7	23.622	600	Flush Grid	UP
13.39	340	1 ¼	31,75	0.500	12,7	31.496	800	Flush Grid	UP
16.73	425	1 ¼	31,75	0.500	12,7	39.370	1000	Flush Grid	UP
20.08	510	1 ¼	31,75	0.500	12,7	47.244	1200	Flush Grid	UP
23.43	595	1 ¼	31,75	0.500	12,7	55.118	1400	Flush Grid	UP
26.77	680	1 ¼	31,75	0.500	12,7	62.992	1600	Flush Grid	UP
30.12	765	1 ¼	31,75	0.500	12,7	70.866	1800	Flush Grid	UP
33.46	850	1 ¼	31,75	0.500	12,7	78.740	2000	Flush Grid	UP



2555HTB-SR Modular Belts, Metric Standard, TAB+ Bearing, Reinforced Outer Modules, Reduced Sideflexing Radius

Width		Pitch		Thickness		Medium Sideflexing Radius		Surface	Materials
Inches	mm	Inches	mm	Inches	mm	Inches	mm		Module
13.39	340	1 ¼	31,75	0.500	12,7	19.685	500	Flush Grid	UP
16.73	425	1 ¼	31,75	0.500	12,7	23.622	600	Flush Grid	UP
20.08	510	1 ¼	31,75	0.500	12,7	31.496	800	Flush Grid	UP
23.43	595	1 ¼	31,75	0.500	12,7	39.370	1000	Flush Grid	UP
26.77	680	1 ¼	31,75	0.500	12,7	47.244	1200	Flush Grid	UP
30.12	765	1 ¼	31,75	0.500	12,7	55.118	1400	Flush Grid	UP
33.46	850	1 ¼	31,75	0.500	12,7	62.992	1600	Flush Grid	UP

ENDURO

maintenance free chains.



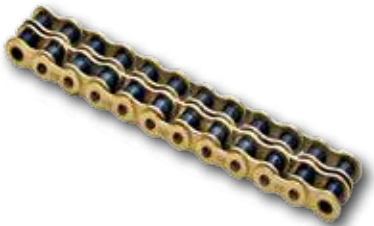
SINGLE STRAND - European series										
REGINA reference	Pitch		Roller diameter		Inside width		Pin diameter		Materials	
	Inches	mm	Inches	mm	Inches	mm	Inches	mm		
										BS
126BS	1/2	12,70	0.335	8,51	0.305	7,75	0.175	4,45		BS
136BS	5/8	15,88	0.400	10,16	0.380	9,65	0.200	5,09		BS
140BS	3/4	19,05	0.475	12,07	0.460	11,68	0.225	5,72		BS
147BS	1	25,40	0.625	15,88	0.670	17,02	0.326	8,28		BS



SINGLE STRAND - American series										
REGINA reference	Pitch		Roller diameter		Inside width		Pin diameter		Materials	
	Inches	mm	Inches	mm	Inches	mm	Inches	mm		
										BS
A40BS	1/2	12,70	0.312	7,92	0.309	7,85	0.157	3,98		BS
A50BS	5/8	15,88	0.400	10,16	0.370	9,40	0.200	5,09		BS
A60BS	3/4	19,05	0.469	11,91	0.495	12,57	0.225	5,72		BS
A80BS	1	25,40	0.625	15,88	0.620	15,75	0.313	7,94		BS



DOUBLE STRAND - European series										
REGINA reference	Pitch		Roller diameter		Inside width		Pin diameter		Materials	
	Inches	mm	Inches	mm	Inches	mm	Inches	mm		
										BS
226BS	1/2	12,70	0.335	8,51	0.305	7,75	0.175	4,45		BS
236BS	5/8	15,88	0.400	10,16	0.380	9,65	0.200	5,09		BS
240BS	3/4	19,05	0.475	12,07	0.460	11,68	0.225	5,72		BS
247BS	1	25,40	0.625	15,88	0.670	17,02	0.326	8,28		BS



DOUBLE STRAND - American series										
REGINA reference	Pitch		Roller diameter		Inside width		Pin diameter		Materials	
	Inches	mm	Inches	mm	Inches	mm	Inches	mm		
										BS
A40BS-2	1/2	12,70	0.312	7,92	0.309	7,85	0.157	3,98		BS
A50BS-2	5/8	15,88	0.400	10,16	0.370	9,40	0.200	5,09		BS
A60BS-2	3/4	19,05	0.469	11,91	0.495	12,57	0.225	5,72		BS
A80BS-2	1	25,40	0.625	15,88	0.620	15,75	0.313	7,94		BS

Components.

Combs.



Transfer Combs for Raised Rib Belts and Chains

For Belts/Chain:

RR 845
RR 1500
RR 1600
1110
3120

Availability of:

Short Fingers
Long Fingers

Roller transfer plates.



For FliteTop® LBP Chains and Matveyor® LBP Modular Belts

Provide to:

Head to Tail Transfers
90° Product Transfers

Availability of:

2-3-5 roller rows
85 & 115 mm widths

Molded sprockets.



For FliteTop® Chains and Matveyor® ULTOP® Modular Belts

Sprockets Type:

Drive Sprockets
Idler Sprockets
Idler Wheels

Availability of:

Solid & Split Sprockets

Bore Type:

Square (Metric - Inch)
Round (Metric - Inch)

Guides profiles.



For FliteTop® Chains and Matveyor® ULTOP® Modular Belts

Magnetic curves.



For FliteTop® and Matveyor® Chains

Machined sprockets.



For FliteTop® Chains and Matveyor® ULTOP® Modular Belts

Sprockets Type:

Drive Sprockets
Idler Sprockets
Idler Wheels

Availability of:

Solid & Split Sprockets

Bore Type:

Square (Metric - Inch)
Round (Metric - Inch)

Tab curves.



For FliteTop® and Matveyor® Chains

Turning discs.



For FliteTop® 1700 Series Chains

Bevel curves.



For FliteTop® Chains